

### ISO5599-1 Sliding plate ceramic seal solenoid valve

#### Character

The product adopts ceramic seal switch technology. Long service time; Large flow; lower force of friction; Insensitive to air quality. You can choose internally piloted or externally piloted for air supply.

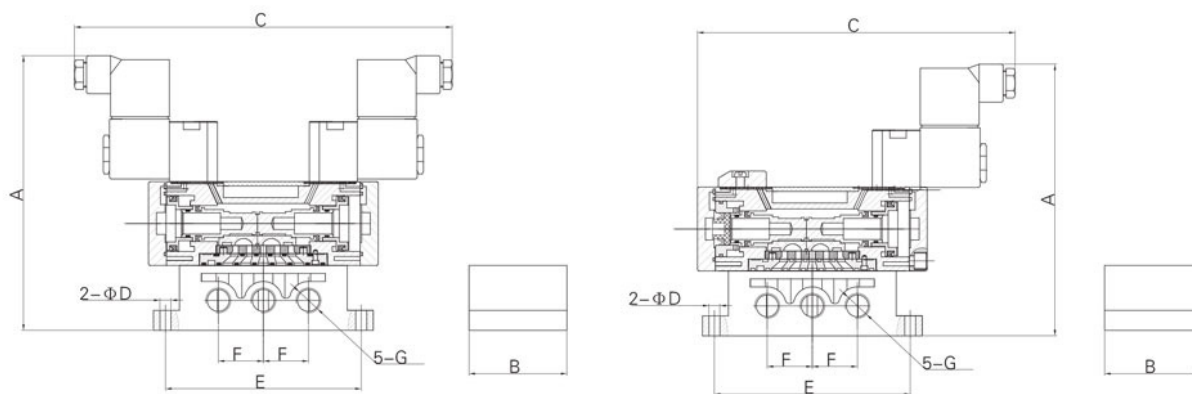
#### Ordering Code

VIX	25	2	1	08	C	AC220V
Series	Function 25: 2 positions/5 Ports	Connection Code 2: 1/4 3: 3/8 4: 1/2	Control Form 1: Single solenoid operated 2: Double solenoid operated	Pipe size 08: G1/4 10: G3/8 15: G1/2	C: Closed Center E: Release Center P: Pressed Center	Standard voltage DC24V AC110V AC220V

#### Technical Parameter

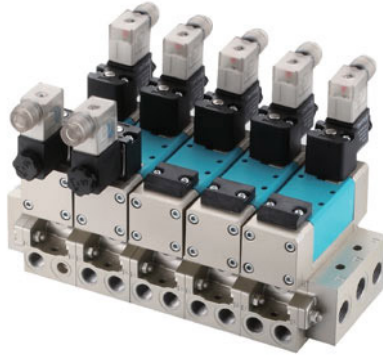
Specification	Item	Function	Pipe Size	Applicable Medium	Applicable Pressure Range	Lubrication	Medium Temperature	Power
VIX2521-08	2 Positions 5Ports	G1/4	Air	0.15 ~ 1.0MPa	Needless	-5 ~ 60°C	AC220V: 5VA DC24V: 4.8W	
VIX2522-08								
VIX2531-10	2 Positions 5Ports	G3/8	Air	0.15 ~ 1.0MPa	Needless	-5 ~ 60°C	AC220V: 8.5VA DC24V: 7W	
VIX2532-10								
VIX2541-15	2 Positions 5Ports	G1/2	Air	0.15 ~ 1.0MPa	Needless	-5 ~ 60°C	AC220V: 8.5VA DC24V: 7W	
VIX2542-15								

#### Figure Dimension



Type	A	B	C	D	E	F	G
VIX2521-08	137.5	48	160	φ 5.5	98	23	G1/4
VIX2522-08	137.5	48	190	φ 5.5	98	23	G1/4
VIX2531-10	160	57	170	φ 6.6	112	27	G3/8
VIX2532-10	160	57	205	φ 6.6	112	27	G3/8
VIX2541-15	165	71	197	φ 6.6	136	42	G1/2
VIX2542-15	165	71	226	φ 6.6	136	42	G1/2

ISO5599-1 Sliding plate ceramic seal solenoid valve



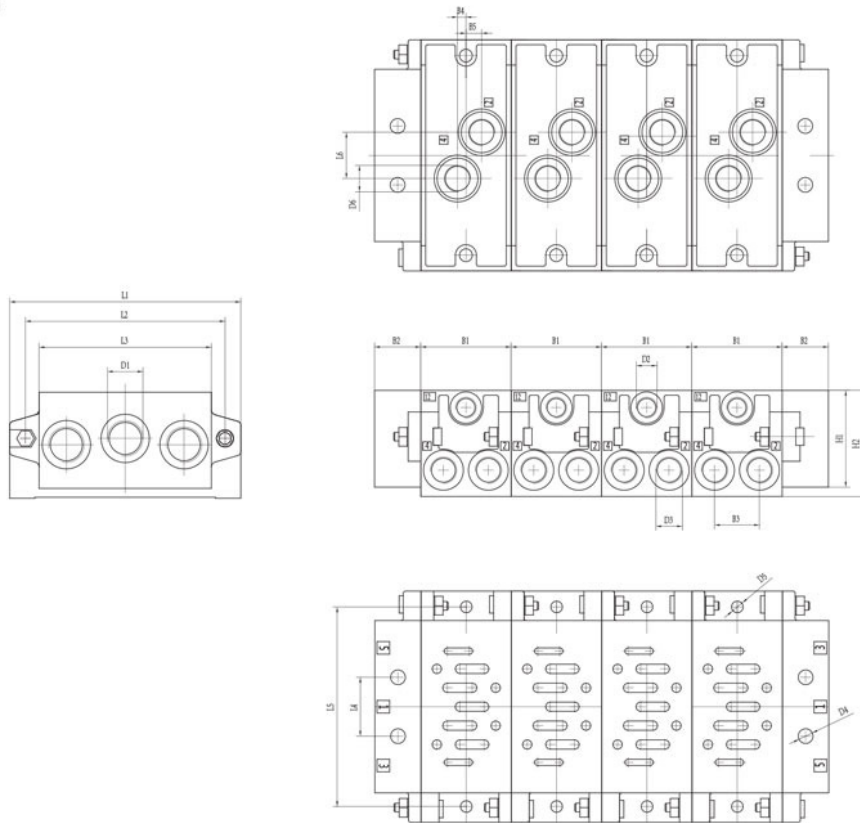
● Character

The product adopts ceramic seal switch technology. Long service time; Large flow; lower force of friction; Insensitive to air quality. You can choose internally piloted or externally piloted for air supply.

Select the external air supply

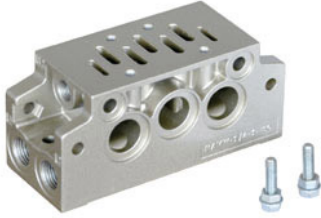
In order to operate at low pressure, the air inlet 14 may be connected to an external pressure on the two electromagnetic supply. The only method of changing the seat back gasket assembly.

■ Figure Dimension



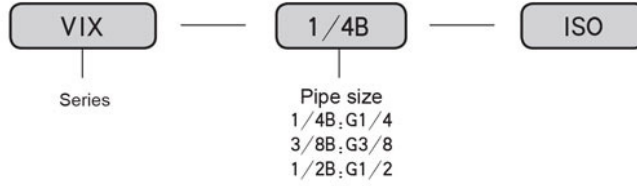
Type	B1	B2	B2	D1	D2	D3	D4	D5	D6	H1	H2	L1	L2	L3	L4	L5	L6
ISO 1	43	22	21.5	G3/8	G1/8	G1/4	φ 7	φ 5.5	G1/4	46	50.5	110	95	82	28	95	22
ISO 2	56	26	27	G1/2	G1/8	G3/8	φ 9	φ 6.6	G3/8	47	60	135	115	96	35	115	28
ISO 3	71	30	35	G1	G1/8	G1/2	φ 12	φ 9	G1/2	56	66	190	168	148	52	168	38

ISO5599-1 Manifold



● VIX-1/4B-ISO

● Ordering Code



● VIX-1C-ISO

● Ordering Code

